

Health & Human Services



```
graph TD; A[Health & Human Services] --- B[Administration]; A --- C[Clinical Financial Services]; A --- D[Developmental Disabilities]; A --- E[Trillium Behavioral Health]; A --- F[Behavioral Health]; A --- G[Community Health Centers]; A --- H[Human Services]; A --- I[Public Health]; A --- J[Youth Services];
```

The diagram is an organizational chart for 'Health & Human Services'. At the top is a central orange box with the title. A vertical line descends from this box and branches into two horizontal lines. The left horizontal line connects to four blue boxes: 'Administration', 'Clinical Financial Services', 'Developmental Disabilities', and 'Trillium Behavioral Health'. The right horizontal line connects to five blue boxes: 'Behavioral Health', 'Community Health Centers', 'Human Services', 'Public Health', and 'Youth Services'.

Administration

Behavioral Health

Clinical Financial Services

Community Health Centers

Developmental Disabilities

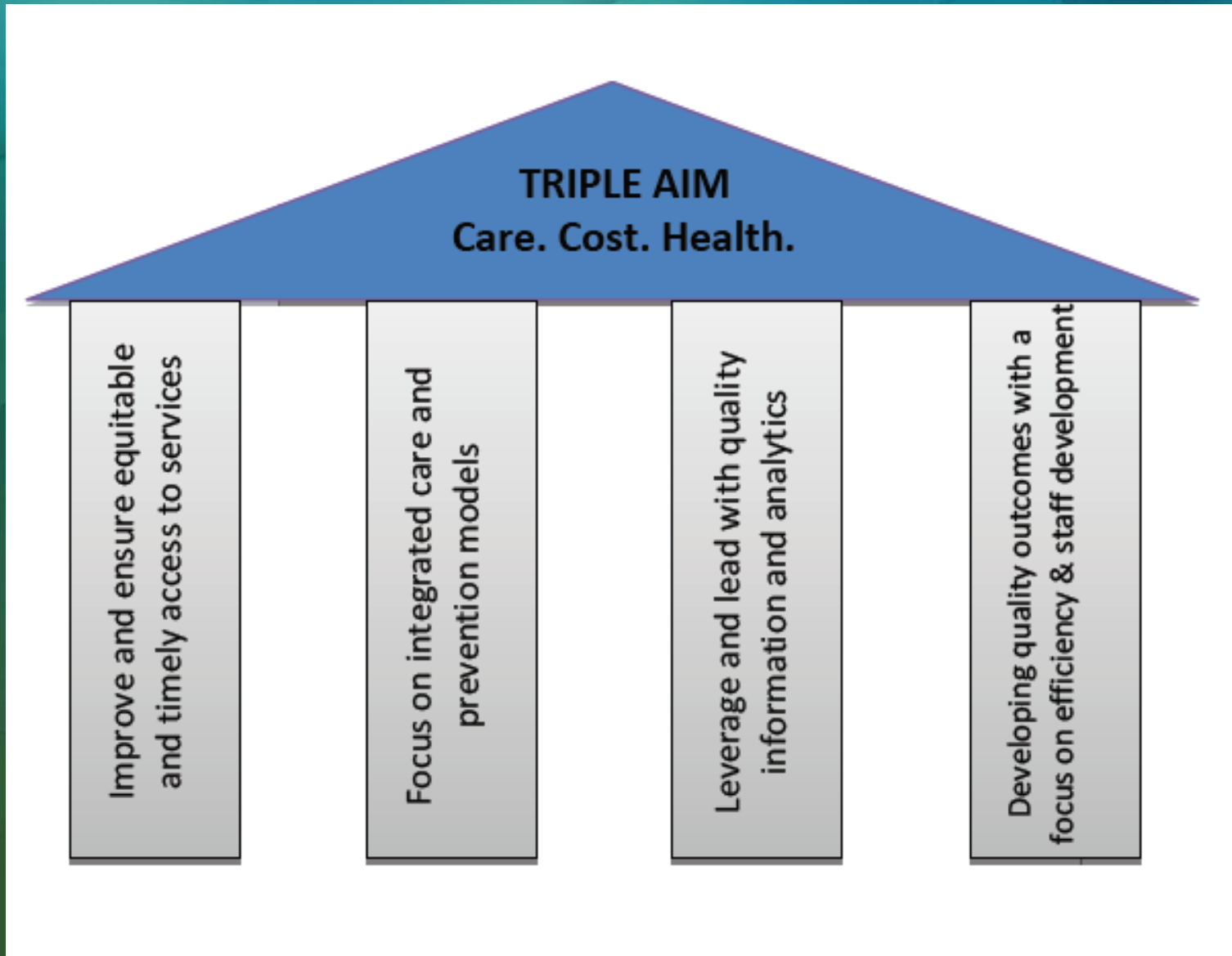
Human Services

Trillium Behavioral Health

Public Health

Youth Services

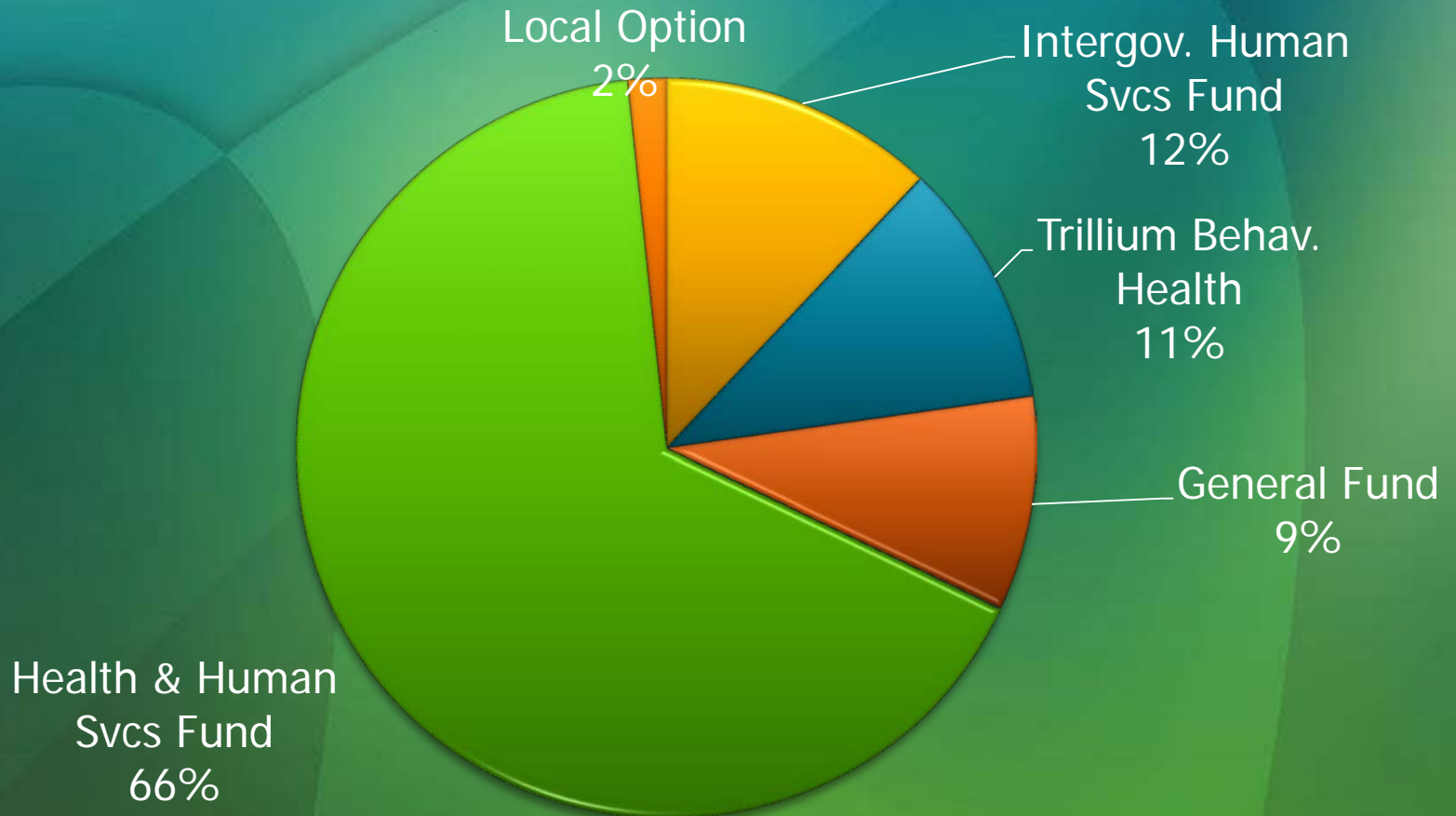
H&HS Strategic Plan Pillars



Priority H&HS Outcomes

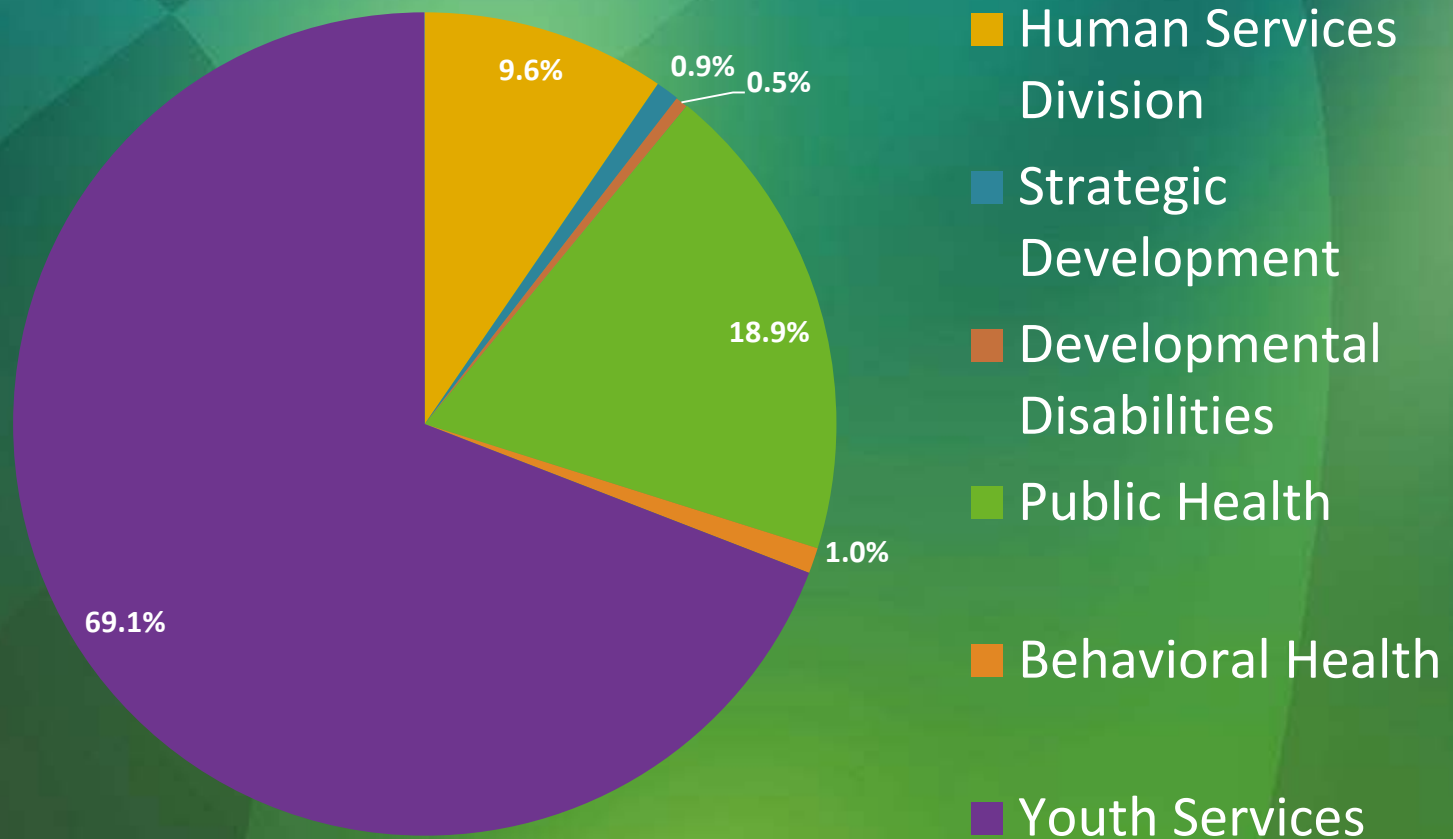
- Reduce Smoking in Lane County
- Reduce the Percentage and Impact of Adverse Childhood Experiences in Lane County
- Improve Fiscal Sustainability Through Better Business Unit Planning, Improved Efficiency and Return on Investment, and Leveraged Partnership Resources

H&HS Budget by Fund



H&HS General Fund by Division

Proposed 14-15



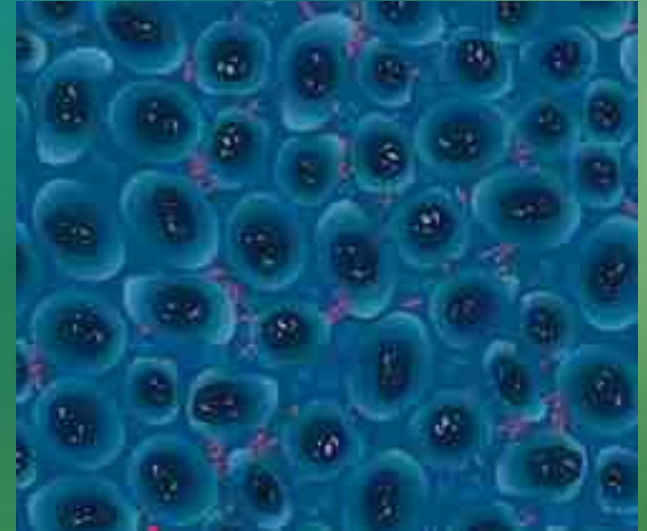
H&HS: Services to the Community

Working together to promote and protect the health, safety and well-being of individuals, families, and our communities.

Public Health

- Communicable Disease
 - Surveillance and Epidemiology
 - Front line of detecting and containing the spread of infectious disease
 - Immunizations

- Environmental Health



Public Health



- Women, Infants and Children
- Maternal/Child Health
- Prevention

Public Health



Human Services & Veterans

- Veteran's Services
- Family Mediation
- Low-income Energy Assistance
- Housing and Homelessness
- Next Year: Workforce & Employment Services



helping people • changing lives

Human Services Division

**Veterans Services of
Lane County**

541-682-4191

veterans@co.lane.or.us



VETERANS SERVICES OF LANE COUNTY - 541-682-4191 - veterans@co.lane.or.us

Developmental Disabilities

- DD Allocation of General Fund is Match Required for Medicaid Funds—Resulting in 3:1 Leverage
- Adult Services
- Child Services
- Protective Services



Developmental Disabilities



Youth Services

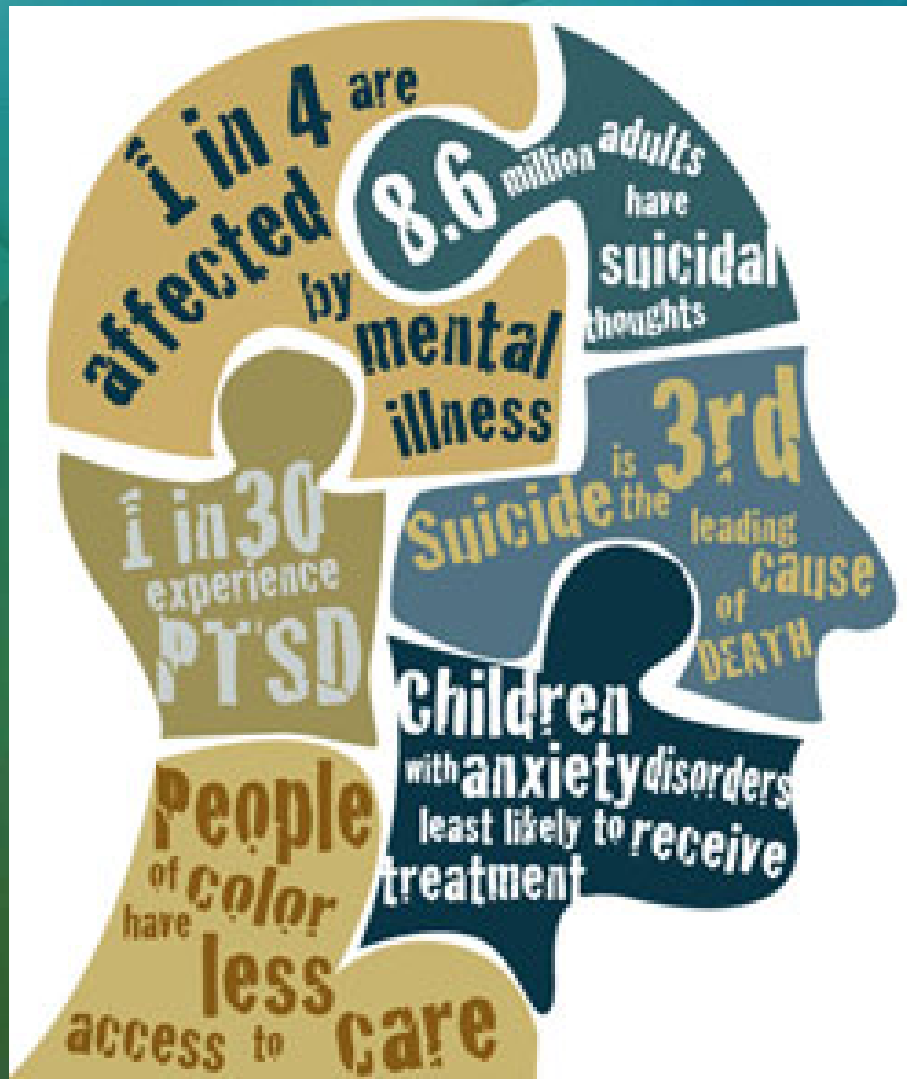
- Safer Communities Through Crime-free Youth
 - Reduce criminal activity
 - Victim and community restitution
 - Skills to complete probation, live within the law, never go on to the adult system
- Secure Programs (Detention and Phoenix)
- Supervision/Counseling
- MLK Education Center & Community Service
- MLK Catering

Youth Services

- 10-Year Public Safety Plan
- Evidence-based Programs
- Passage of Public Safety Levy
- Increased Revenue Options



Behavioral Health



Community Health Centers

- Primary Care, Behavioral Health, Preventive Dentistry
- RiverStone, Charnelton, Springfield High School, Primary Care at Behavioral Health
- Provided more than 53,000 primary care/dental visits to more than 23,000 patients in 2013
- New clinic to open Summer 2014



Community Health Centers



Respect. Compassion.
Excellence. Empowerment.

Trillium Behavioral Health

- True Public/Private Partnership
- County Staff Coordinate the Behavioral Health Services for Lane County Residents on the Oregon Health Plan through Trillium
- Operations Funded Entirely by Contract with Trillium



Trillium Behavioral Health



Strategic Development

- Leveraged More Than \$1.2 Million Year to Date for People Living in Lane County
- Work to Develop Financial and Partnership Resources
- Coordinate with Community Efforts to Maximize Impact



Highlights Moving Forward

- Continued Health Care Transformation
- New Community Health Center Clinic Opening
- Integration of Workforce Partnership Direct Service Staff



Health & Human Services:

Working together to promote and protect the health, safety and well-being of individuals, families, and our communities.

County Budget Presentation May 1, 2014

